

# PROJECT DESCRIPTION

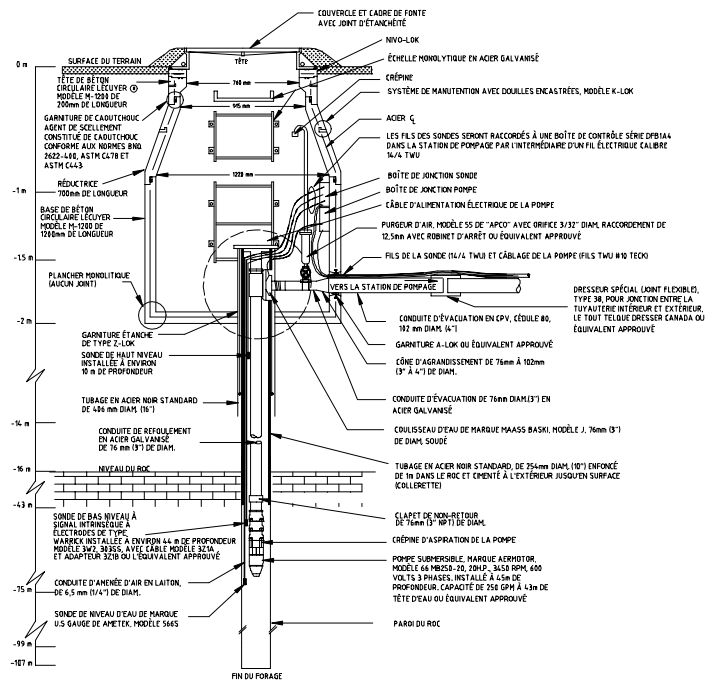
- Characterization  
  Restoration  
  **Hydrogeology**  
  **Modelling**  
  Risk analysis  
 Research and development

## HYDROGEOLOGICAL INVESTIGATION OF MUNICIPAL POTABLE WATER REQUIREMENTS AT SAINT-ISIDORE, QUEBEC

<b>Parameters of Concern</b>	None
<b>Project Duration:</b>	6 months
<b>Performance :</b>	See results
<b>Cost:</b>	100 000 \$
<b>Client :</b>	Municipality

**Issue:**

The town of Saint-Isidore, located a few kilometers south of Montreal, faced a serious drinking water supply problem. This situation was becoming more and more problematic because of growth in the population and a significant diminution in the capacity of the town's only pumping well.



**Work Performed:**

The work performed included the drilling of a testhole, pumping tests (over long and short periods of time), well construction, mathematical modelling, and the preparation of technical specifications and plans.

**Results:**

The installation of a pumping well which has the potential to meet the water supply needs of the municipality for the next 20 years. Utilizing the results of mathematical modelling, groundwater management rules were defined and a wellhead protection area (capture zone of the pumping well where every activity that might have an impact on the potable groundwater supply is rigorously assessed) was established.